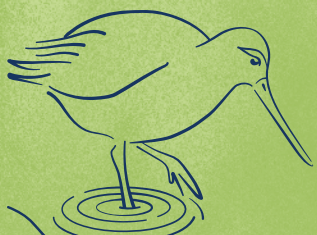


Living in harmony together

We welcome you to enjoy the Northumberland Coast. This is a spectacular place to discover, full of natural wonders, but the wildlife here can only survive if given space and shown respect. Your actions can help make this special place thrive.

Know where you are and what rules are in place – these can vary along different parts of the Northumberland Coast, and there are seasonal access restrictions. Please check local signage.

Friendly staff and volunteers can help with all your queries and will love to tell you more about the wildlife and landscape.



Go easy!

Give all wildlife space to feed and rest (we suggest at least 100m). The birds here have travelled incredible distances and are exhausted. If they fly off, then you are already too close. A bird in flight can't feed at all!

In spring and summer any disturbance can result in birds abandoning eggs or chicks and disrupt feeding and resting activity; in winter it can cause death.



Note signs of distress

When birds or seals raise their heads or make a distress call it's a sign of alarm. If this happens move away and view from a distance.

Scan to hear distress calls



Ringed plover



Oystercatcher



Follow all signage

Give fenced areas a wide berth. This may mean no dogs or people are allowed. (These can change year by year, depending on where the birds choose to nest). Remember birds also nest, feed and roost outside these areas.



Keep to paths

How would you feel if someone crushed your home? Avoid trampling on delicate flowers and nesting birds.



Take the Lead!

We know dogs love to play, but birds and seals see dogs as predators and have a strong flight reaction as they would to a fox or wolf. Please observe signs and put your dog on a lead before you reach the site. Within the Lindisfarne National Nature Reserve, and at the Long Nanny shorebird site, dogs must be kept on a short lead or at heel at all times. Never let dogs chase birds or seals – this may seem harmless and playful but could cause serious trauma or even death.



Don't go for the close-up shot!

You could use binoculars or a camera zoom and please avoid flash photography.



Seals bite!

Seals are easily disturbed, which can cause them injury or to abandon pups. Their bite can be very harmful to dogs and humans – keep at least 100m clear.



No camping

Camping and lighting fires are not permitted anywhere on Lindisfarne National Nature Reserve or on National Trust land. Any open flames may cause a fire.



No drones

Flying drones is prohibited on Lindisfarne National Nature Reserve and National Trust land.



Beware invasive plants

Beware invasive pirri-pirri bur – it is very spiky! Keep to the main paths. Check pet fur and clothes before you leave. Pirri-pirri burs spread easily, threatening the dune ecosystem. Don't take pirri-pirri bur to new places to grow.



No off-road driving

Driving vehicles off road is prohibited.



Leave no trace

Take your litter home and bin your dog waste. Take away only memories.

